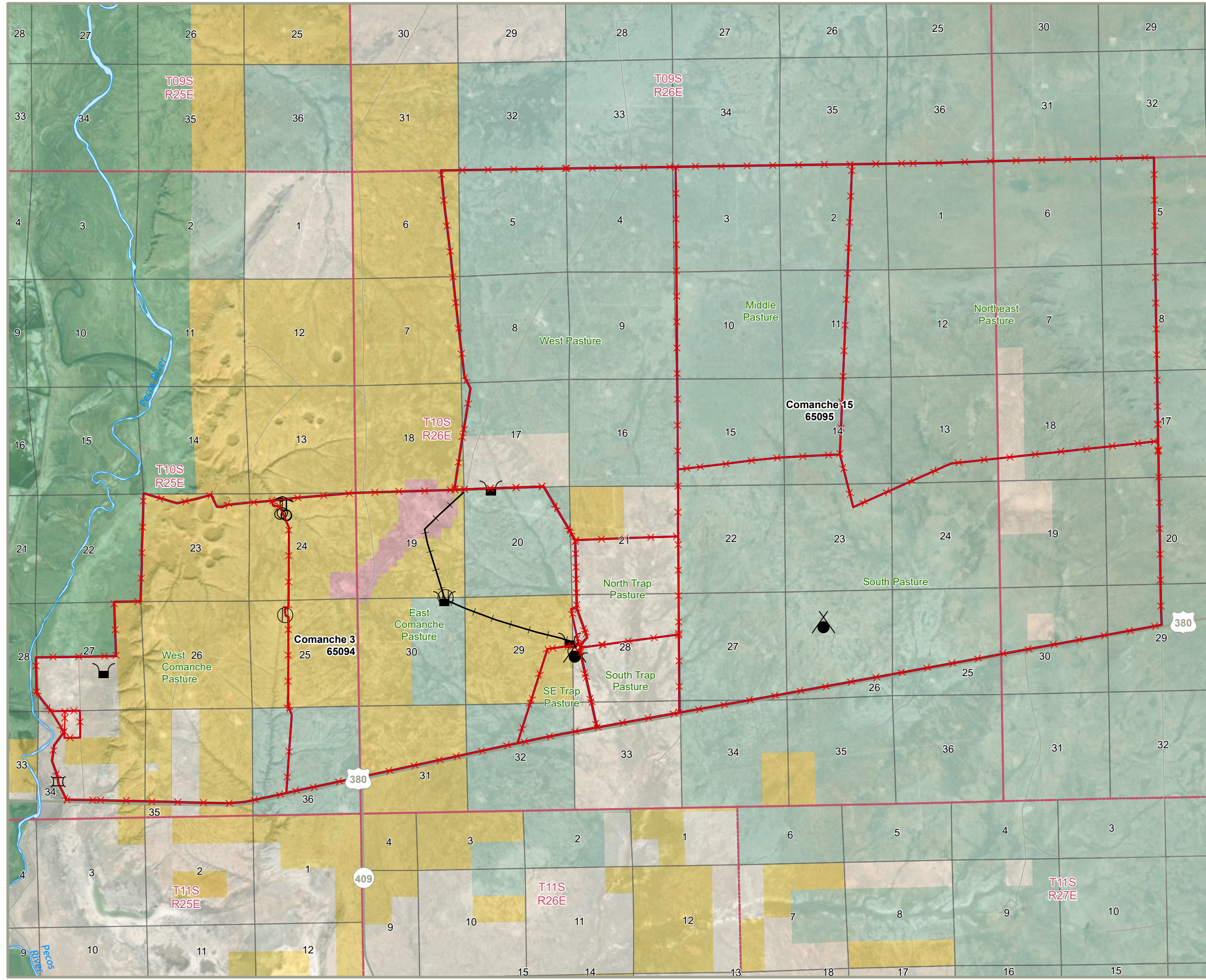


# Comanche 3 and Comanche 15 Allotments #65094 & 65095

CHAVES COUNTY, NEW MEXICO



- Fence
- Subsurface
- Cattleguard
- Corrals and loading chutes
- Springs
- Storage tank
- Trough
- Well with Storage
- Allotment Boundary
- Bureau of Land Management
- Dept. of Defense
- Fish & Wildlife Service
- Private
- State

